



East Coast Bullbars (ECB Pty Ltd)

Tel: 07 3897 5700

Fax: 07 3283 1168

ecb@ecb.com.au www.ecb.com.au

29 Snook St  
Clontarf QLD 4019  
Australia

Po Box 122  
Margate QLD 4019  
Australia

## EAT254SY

REPLACES: EAT250SY  
REVISED: 10.01.19

### FITTING INSTRUCTIONS

#### TOYOTA LANDCRUISER 200 SERIES 1-16 ON ECB BIG TUBE™ PROTECTION BAR VEHICLE FRONTAL PROTECTION SYSTEM (VFPS) FOR AIR BAG & ADR COMPLIANT VEHICLES

Check installation hardware before commencing.

Special tools: T30 Torx bit with suitable driver.

1. Check size of templates as size may vary according to printer. Using a sharp pair of scissors, accurately cut templates (supplied) from fitting instructions. Mask vehicle from bumper attachment point around bumper so bumper skin is not marked. Hold templates onto vehicle and mark cut line onto bumper skin. Across centre of bumper, cut between the top of the fog light openings and follow the bumper line. **See figure 1.**
2. Lift bonnet
3. Remove grille and headlamp cover, seven plastic push pull clips.
4. Remove chrome infills on headlights by pulling infills forward to remove. **See figure 2.**
5. Disconnect wiring harness from camera and radar unit. Remove three bolts from top of grille, apply pressure on lower grille clips whilst pulling forward on grille to remove.
6. Remove plastic splash guards from around tow points; four 10mm head bolts and one plastic 12mm head nut (per side).
7. Remove bumper assembly. Six 10mm head bolts from underside centre of bumper, three T30 Torx head screws from front of wheel arch (per side), and three push pull clips from behind grille. Pull bumper sides outward to release plastic clips from guard edges and plastic bolt clips on inner guard, pull forward and remove bumper.
8. Remove polypropylene infill and aluminium bumper support, three 17mm nuts per side accessed from holes in front of support. Remove four 14mm head bolts (per side) from crash cans. Remove crash cans.
9. Remove tow hooks. Two 17mm bolts (per side).
10. Trim plastic radiator surrounds to allow fitment of ECB steel mounting bracket. **See figures 3 and 4.**
11. Slide ECB steel mounting bracket (supplied) onto front of chassis rails. Attach using eight M10 nuts, spring washers and flat washers (supplied). **Finger tighten only. See figure 5.**
12. Using two M12 x 55 bolts, spring washers and flat washers per side (supplied), refit original tow hooks, through ECB steel mounting bracket to vehicle. **Tighten all bolts. See figure 6.**
13. Disconnect indicator and parking lights on vehicle. Install ECB quick click wiring harnesses (supplied) between disconnected harness and indicator / park lights on vehicle. Run wiring out from under lights ensuring clearance from sharp edges and moving parts.
14. Using a jigsaw or similar, cut bumper along marked lines. Attach 3mm clip lock trim to cut line of bumper. Trim clip lock ends to suit end of plastic bumper. **See figure 7.**



East Coast Bullbars (ECB Pty Ltd)

Tel: 07 3897 5700

Fax: 07 3283 1168

ecb@ecb.com.au www.ecb.com.au

29 Snook St  
Clontarf QLD 4019  
Australia

Po Box 122  
Margate QLD 4019  
Australia

15. Zip tie washer line to under side of bumper stiffener with ties supplied. **See figure 8.**
16. Refit bumper cover to vehicle. Connect headlight washers (if fitted).
17. Attach 6mm clip lock trim (supplied) to top centre of ECB protection bar. **See figures 9 & 10.**
18. Fit the indicator/ park/ DRL lights to the protection bar ensuring they are the correct way up. **See figure 11.**
19. Attach protection bar to outside of steel mounting brackets using three M12 x 40 bolts (supplied), washers, spring washers and nuts (per side).
20. Align protection bar with approximately 12mm clearance off bumper. **See figures 12 and 13. Tighten all bolts.**
21. Connect ECB indicator/DRL/park light. Ensure wiring is routed in such a manner to avoid any sharp edges etc
22. Check all lights for correct operation.
23. Using M6 x 20 bolts, flat washers and nyloc nuts (supplied), attach 3mm alloy under body guard to top of end skirt and underside of lower leg of channel. **Tighten all bolts. See figure 13.**
24. Pushing inner guard into position in wheel arch, secure plastic guard liner to under body guard with self drilling screws supplied. **See figure 14 and 15.**
25. On passengers side only: using under body guard as a guide and pushing inner guard up into wheel arch opening, drill a 6 mm hole at front of suspension arm. **NOTE:** Bolt must be placed in hole from rear of vehicle. Nut must be on top to prevent from rubbing on suspension parts. **See figure 16.**
26. Trim inner guards using a sharp knife or scissors or similar. **See figure 17 and 18.**
27. Fit centre bash plate to underside of protection bar, using six M6 x 20 bolts, flat washers and nyloc nuts (supplied). **See figure 19.**

#### **ENSURE NUMBER PLATE IS CLEARLY VISABLE**

**Note:** When fitting/refitting the licence plate to the vehicle, ensure there is no obstruction to licence plate vision in accordance with local authorities. If required relocate licence plate to an alternate location.

#### **Further VFPS Notes:**

- a) Do not attach VFPS to the vehicle using anchorages not intended for this purpose (e.g. engine mounting bolts).
- b) Do not use this product for any vehicle make or model, other than those specified by the VFPS manufacturer.
- c) Do not remove the plaque or label from the VFPS.
- d) Do not modify the structure of the VFPS in any way.
- e) No accessory or fitment should project forward of the VFPS forward profile.
- f) **ENSURE THESE INSTRUCTIONS ARE LEFT WITH VEHICLE OWNER AND/OR OPERATOR.**

#### **IMPORTANT INFORMATION**

Periodically check bolts and nuts for correct tightness, especially if travelling on rough roads



**East Coast Bullbars (ECB Pty Ltd)**

Tel: 07 3897 5700

Fax: 07 3283 1168

ecb@ecb.com.au www.ecb.com.au

29 Snook St  
Clontarf QLD 4019  
Australia

Po Box 122  
Margate QLD 4019  
Australia

**WORLD'S BEST  
ALLOY BULLBARS**

**FITTING KIT**

1 – ECB Steel mounting bracket	8 – M10 x 1.25 nuts
1 – ECB under body guard	13 – M6 x 20 bolts
1 – Pair ECB side under body guards	24 – M6 flat washers
4 – M12 x 1.25 x 55 bolts	11 – M6 nyloc nuts
6 – M12 x 1.25 x 40 bolts	1 – ECB LED Indicator / Park light/ DRL (ICLED105ECB)
16 – M12 flat washers	1 - Quick Click Indi / Park kit (IC15TOLCIPDH)
10 – M12 spring washers	1 – 2100mm length, 6mm clip lock trim
6 – M12 x 1.25 nuts	2 – 550mm lengths, 3mm clip lock trim
8 – M10 flat washers	10 – 300mm zip ties
8 – M10 spring washers	



**Figure 1:** Approximate cut line on vehicle.



**Figure 2:** Chrome infill to remove



**Figure 3:** Approximate trim on drivers side shroud



**Figure 4:** Approximate trim on passengers side shroud



**WORLD'S BEST  
ALLOY BULLBARS**

**East Coast Bullbars (ECB Pty Ltd)**

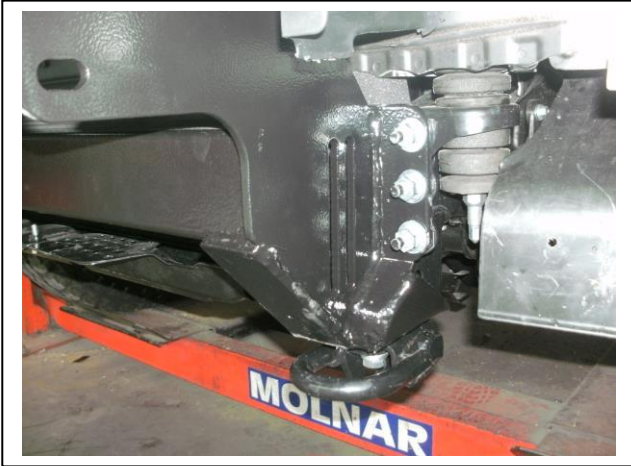
Tel: 07 3897 5700

Fax: 07 3283 1168

ecb@ecb.com.au www.ecb.com.au

29 Snook St  
Clontarf QLD 4019  
Australia

Po Box 122  
Margate QLD 4019  
Australia



**Figure 5:** Three bolts to crash can assembly



**Figure 6:** Bolts through tow hook assemblies



**Figure 7:** 3mm clip lock, trimmed to suit rear of cut



**Figure 8:** Headlight washer loom attachment under bumper stiffener.



**Figure 9:** 6mm clip lock trim top view



**Figure 10.** 6mm clip lock trim end trim



East Coast Bullbars (ECB Pty Ltd)

Tel: 07 3897 5700

Fax: 07 3283 1168

ecb@ecb.com.au www.ecb.com.au

29 Snook St  
Clontarf QLD 4019  
Australia

Po Box 122  
Margate QLD 4019  
Australia

WORLD'S BEST  
ALLOY BULLBARS



Figure 11. Indicator/DRL/Park



Figure 12: Protection bar side view



Figure 13: Protection bar front view



Figure 14: Drivers side guard liner trim line.



Figure 15: Passenger side guard liner trim line.

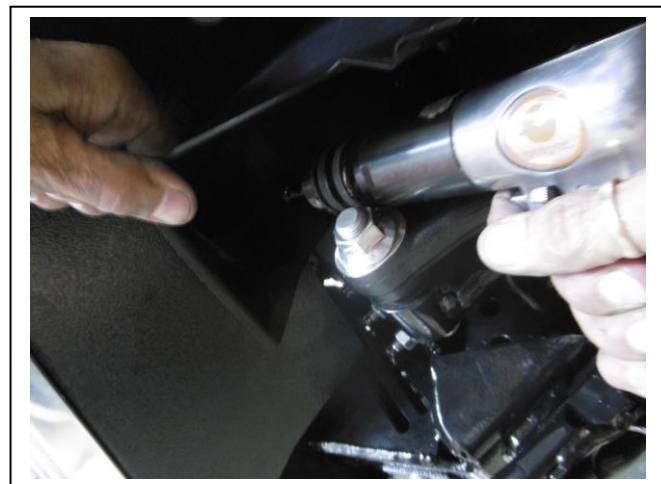


Figure 16: Passenger side suspension guard



**WORLD'S BEST  
ALLOY BULLBARS**

**East Coast Bullbars (ECB Pty Ltd)**

Tel: 07 3897 5700

Fax: 07 3283 1168

ecb@ecb.com.au www.ecb.com.au

29 Snook St  
Clontarf QLD 4019  
Australia

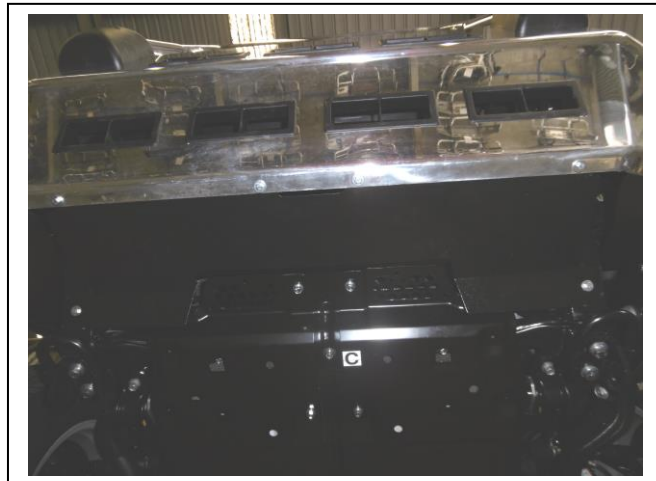
Po Box 122  
Margate QLD 4019  
Australia



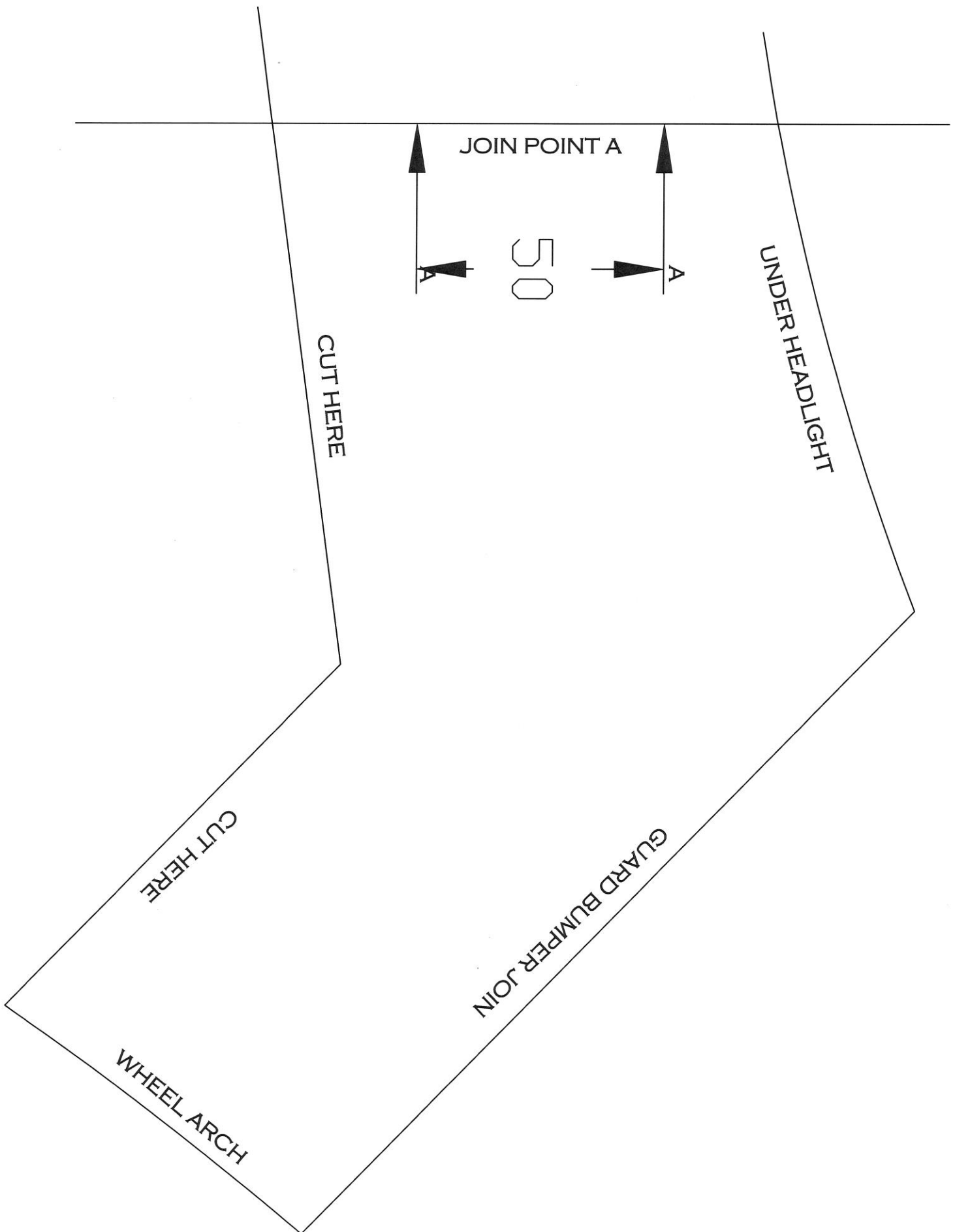
**Figure 17:** Passenger side guard trimmed



**Figure 18:** Drivers side guard trimmed



**Figure 19:** Underbody guard fitted





**WORLD'S BEST  
ALLOY BULLBARS**

**East Coast Bullbars (ECB Pty Ltd)**

Tel: 07 3897 5700

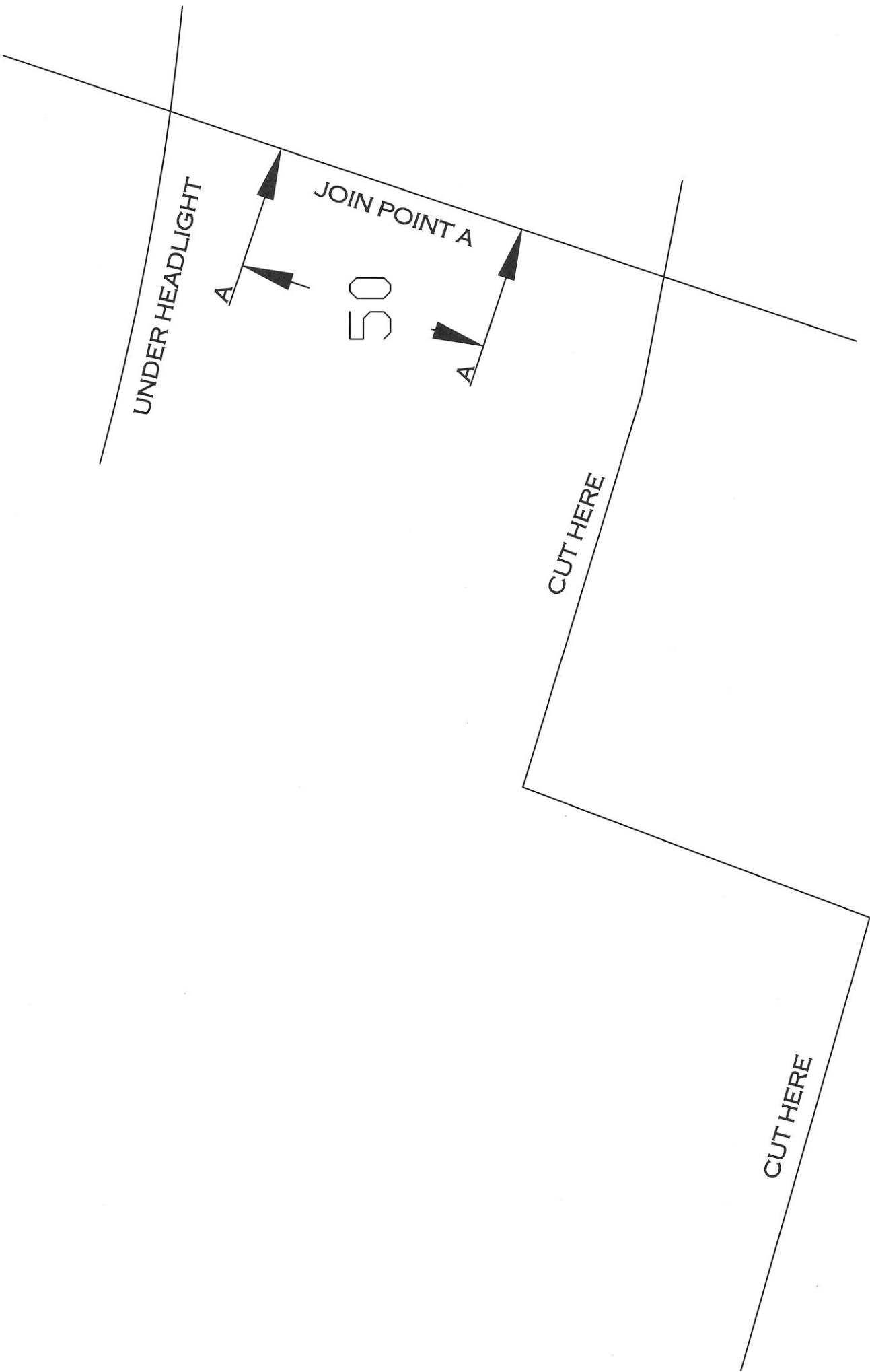
Fax: 07 3283 1168

[ecb@ecb.com.au](mailto:ecb@ecb.com.au) [www.ecb.com.au](http://www.ecb.com.au)

29 Snook St  
Clontarf QLD 4019  
Australia

Po Box 122  
Margate QLD 4019  
Australia







**WORLD'S BEST  
ALLOY BULLBARS**

**East Coast Bullbars (ECB Pty Ltd)**

Tel: 07 3897 5700

Fax: 07 3283 1168

ecb@ecb.com.au [www.ecb.com.au](http://www.ecb.com.au)

29 Snook St  
Clontarf QLD 4019  
Australia

Po Box 122  
Margate QLD 4019  
Australia



**WORLD'S BEST  
ALLOY BULLBARS**

**East Coast Bullbars (ECB Pty Ltd)**

Tel: 07 3897 5700

Fax: 07 3283 1168

ecb@ecb.com.au www.ecb.com.au

29 Snook St  
Clontarf QLD 4019  
Australia

Po Box 122  
Margate QLD 4019  
Australia

**We value your comments**

Dear Fitter,

ECB would like to know how you went with the installation of this product. We value your comment and may need to contact you to clarify some details so please complete your contact details clearly.

We would appreciate if you could complete as many of the following details as possible.

<b>Your Name:</b>	<b>Your contact No.</b>
<b>Product Part No.</b>	<b>Product Invoice No.</b>
<b>Product Description:</b>	<b>Make, model, and year of vehicle:</b>
<b>Product Work Order No.</b>	<b>Company your from/Company product purchased from:</b>

**Date of Fitment:** \_\_\_\_/\_\_\_\_/\_\_\_\_

Was the fitting hardware supplied complete?

Yes

No

If no what was not supplied

\_\_\_\_\_  
\_\_\_\_\_

Did the installation go well?

Yes

No

Please provide comments

\_\_\_\_\_  
\_\_\_\_\_  
\_\_\_\_\_

Please draw diagrams if you need to.

**Post to**  
Reply Paid 122  
PO Box 122  
Margate QLD 4019

**Fax to**  
(07) 3283 1168



**WORLD'S BEST  
ALLOY BULLBARS**

**East Coast Bullbars (ECB Pty Ltd)**

Tel: 07 3897 5700

Fax: 07 3283 1168

ecb@ecb.com.au [www.ecb.com.au](http://www.ecb.com.au)

29 Snook St  
Clontarf QLD 4019  
Australia

Po Box 122  
Margate QLD 4019  
Australia



WORLD'S BEST ALLOY BULLBARS

East Coast Bullbars (ECB Pty Ltd)

Tel: 07 3897 5700

Fax: 07 3283 1168

ecb@ecb.com.au www.ecb.com.au

29 Snook St  
Clontarf QLD 4019  
Australia

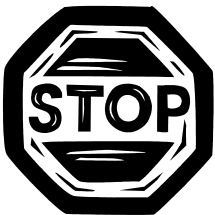
Po Box 122  
Margate QLD 4019  
Australia

# DESPATCH CHECKLIST EAT254SY

Work Order #		<b>See other side of this page for photos of all mounts</b>
Finish:		
Transport:		
Due Date:		

- OC\_\_\_\_1 – Steel mounting bracket
- OC\_\_\_\_1 – Passengers Side underbelly guard (EAT250SY\_UP3AL)
- OC\_\_\_\_1 – Drivers Side underbelly guard (EAT250SY\_UD3AL)
- OC\_\_\_\_1 – Center Side underbelly guard (EAT250SY\_U3AL)
- OC\_\_\_\_2 – ECB Overriders
- OC\_\_\_\_7 – 6mm air vents
- BK\_\_\_\_1 – Bolt Kit
- BK\_\_\_\_1 – Pair ECB LED Indicator / Park Lights / DRL - **ICLED105ECB**
- BK\_\_\_\_1 – Quick Click Indicator / park light Harness (**IC15TOLCIPDH**)
- BK\_\_\_\_1 – 2100mm length 6mm clip lock trim
- BK\_\_\_\_2 – 550mm lengths 3mm clip lock trim
- WR\_\_\_\_2 – ECB Overriders - **FITTED TO BAR**
- WR\_\_\_\_7 – 6mm Air vents - **FITTED TO BAR**
- WR\_\_\_\_Steel mounting bracket - **FITTED TO BAR**
- WR\_\_\_\_**Agi-Pipe must be put on the end of the bar (wings)**

\_\_\_\_\_/\_\_\_\_\_  
Wrapper's initials / Checker initials



**Is this product “the best it can be” Yes**  
**If NO fix before continuing**

All parts checked and completed by:

Nut and bolts: \_\_\_\_\_ Date \_\_/\_\_/\_\_

Order control: \_\_\_\_\_ Date \_\_/\_\_/\_\_

Final wrap check: \_\_\_\_\_ Date \_\_/\_\_/\_\_



**WORLD'S BEST  
ALLOY BULLBARS**

**East Coast Bullbars (ECB Pty Ltd)**

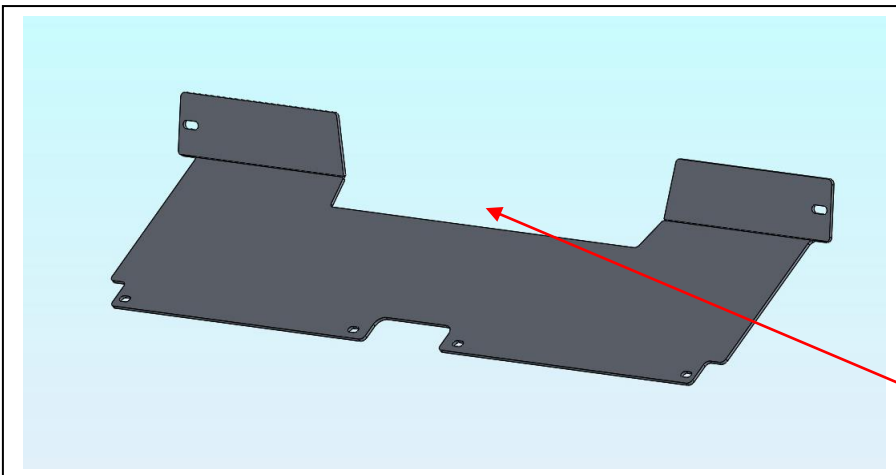
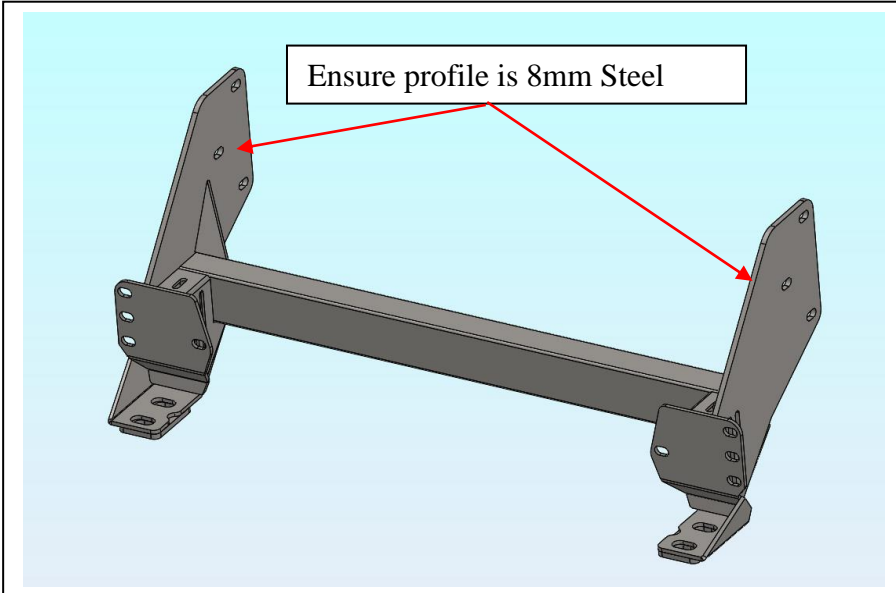
Tel: 07 3897 5700

Fax: 07 3283 1168

ecb@ecb.com.au www.ecb.com.au

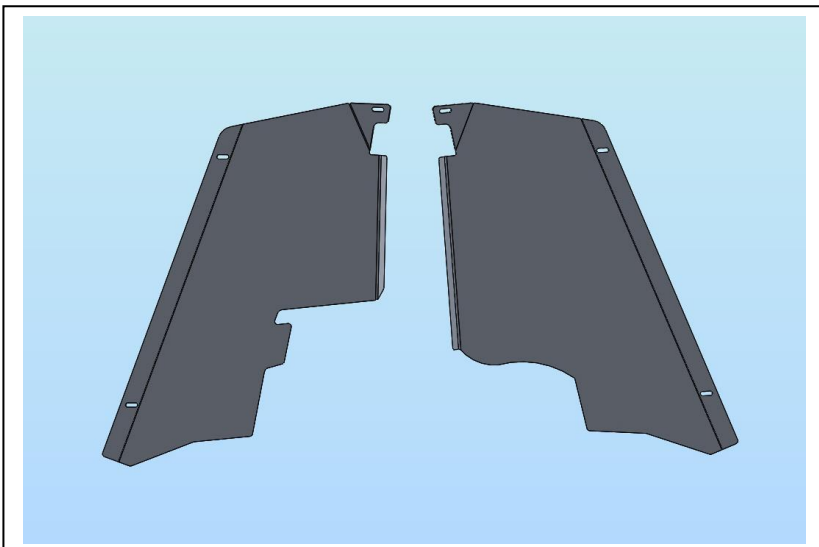
29 Snook St  
Clontarf QLD 4019  
Australia

Po Box 122  
Margate QLD 4019  
Australia



EAT108 to 112  
plate width: 87mm

EAT254 to EAT257  
Plate width: 152mm  
Measure here



\_\_\_\_\_/\_\_\_\_\_  
Wrapper's initials / Checker initials